

H.265 HEVC/H.264 AVC/MPGE4

FHD Video/Audio Live Encoder

Manual

1.Interface



Power: DC 9-12V 1A

HDMI IN: HDMI Video Input Port

Power: Power Light(Red)

Reset:Recovery to Default setting

LAN: 1000M Ethernet Port

Instructions:

A. Power ----9-12 V/DC 1A;

B. Reset----- it is used to reset the equipment; after the equipment is started, press the button for 10 seconds, the equipment IP is recovery to the default IP, 192.168.1.168.

C. Video input --- it is used to input high-definition HDMI

D. LAN ---- 100M or 1000M Ethernet connection.

2.Specification

Input

Video	1.4 HDMI HDCP
HDMI resolution ratio	1920x1200_60P,1920x1080_50/60P,1920x1080_50/60i, 1280x720_50/60p 720x576i/p 720x480i/p.
Encoding	H.265 HEVC or H.264 AVC Profile 4.2
Bitrate	16kbit/s~32Mbit/s
Bitrate control	CBR/VBR
GOP	Adjustable

Audio:

Encoding	AAC AAC+ AAC++ MP3 MP2 AC3 G.711A/U
Re-Sampling rate	44100/48000
Bitrate	48K, 64K, 96K, 128K, 160K, 192K, 256K
Sampling precision	24 bit
Bitrate	64Kb/s~384Kb/s

System:

Network	100M/1000M Base-T Ethernet /WIFI 2.4/5.8G 802.11n/11g/11b
Stream	SRT,UTP,HTTP,FLV,HLS,RTSP,RTMP RTMPS RTP UDP(Multicast,Unicast) and ONVIF
Configuration interface	WEB operation interface or CGI Command
Updating	Software update

General

Size	102x166x28mm
Net Weight	0.3KG
Temperature range	-20~55℃(workable)
Power supply	9-12V/1A
Power consumption	5W

3. System Setting :

3.1 Reset

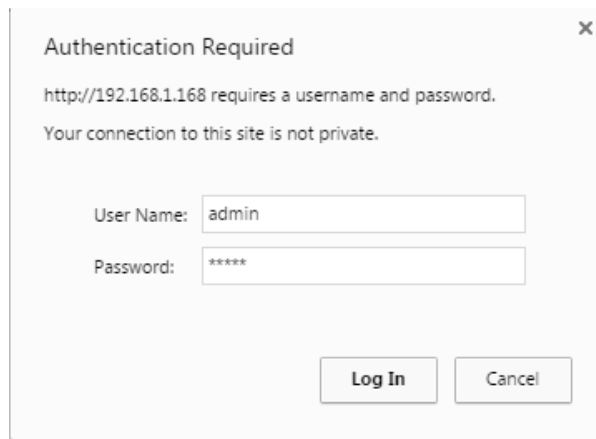
there is a RST hole on the front panel which is used to conduct initialization reset for the high-definition encoder. When the equipment is powered on, press the button and hold for 12 Seconds, when the power light is off, release the button, and all the parameters will be initialized. The initialized IP is 192.168.1.168.

3.2 Computer IP Address Setting

Computer IP can be set as 192.168.1.*. Note: anyone from 1—254, except for 168

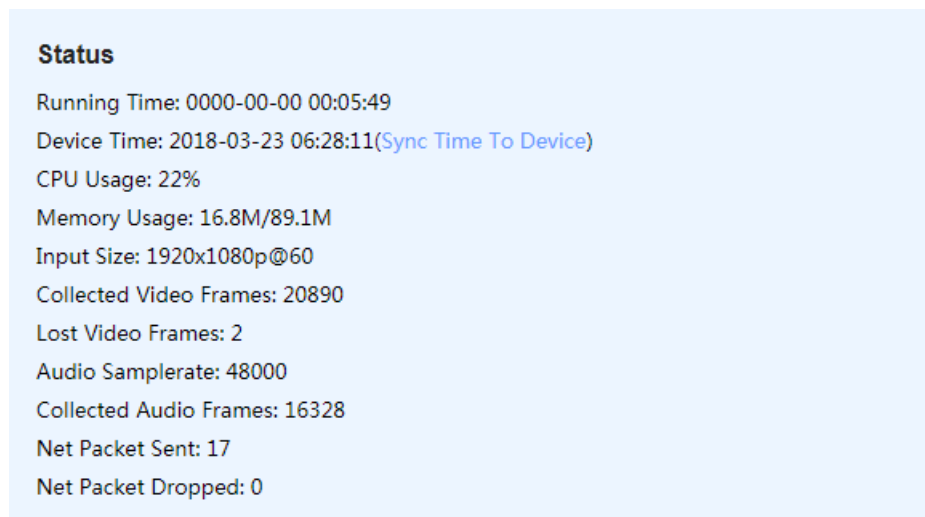
3.3 Open IE Explorer

Fill <http://192.168.1.168> to address bar, Default user name: *admin* Pass: *admin*



3.4 Status Display

3.4.1 status: when there is video input, it will display resolution of the input, and if there is not status info, input is not correct, please check your video source or video cable.



3.4.2 main stream : it shows main Stream Encoding Type,Resolution,Bitrate and access address

Main Stream

Encoding Type: H.264
Encoded Size: 1920x1080@30
Bitrate(kbit): 2800
TS URL: http://192.168.1.168/0.ts
HLS URL: http://192.168.1.168/0.m3u8
FLV URL: http://192.168.1.168/0.flv
RTSP URL:rtsp://192.168.1.168/0
RTMP URL: Disable
RTMP PUSH URL(Not Connected): rtmp://192.168.1.50/live/0
Multicast URL: udp://@238.0.0.1:1234
[Preview----->Click](#)

3.4.3 Sub stream: it shows Sub-Stream Encode Type ,Resolution Bitrate and access address

Substream1

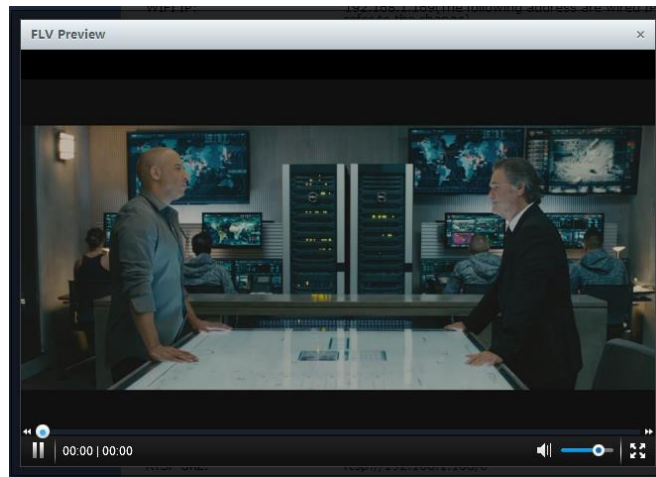
Encoding Type: H.264
Encoded Size: 1280x720@30
Bitrate(kbit): 1800
TS URL: http://192.168.1.168/1.ts
HLS URL: http://192.168.1.168/1.m3u8
FLV URL: http://192.168.1.168/1.flv
RTSP URL: rtsp://192.168.1.168/1
RTMP URL: rtmp://192.168.1.168/live/1
RTMP PUSH URL: Disable
Multicast URL: Disable
[Preview----->Click](#)

3.3.4 Preview:

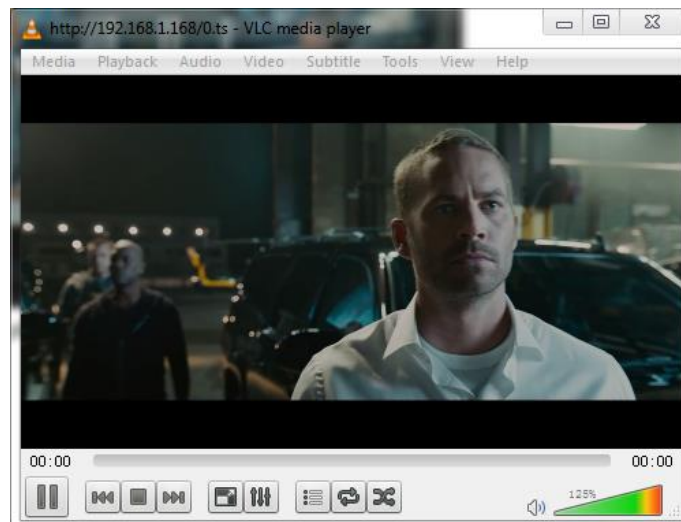
a.Click [Preview](#) ,it will play stream in browser

Main Stream

Encoding Type: H.264
Encoded Size: 1920x1080@30
Bitrate(kbit): 2800
TS URL: http://192.168.1.168/0.ts
HLS URL: http://192.168.1.168/0.m3u8
FLV URL: http://192.168.1.168/0.flv
RTSP URL:rtsp://192.168.1.168/0
RTMP URL: Disable
RTMP PUSH URL(Not Connected): rtmp://192.168.1.50/live/0
Multicast URL: udp://@238.0.0.1:1234
[Preview----->Click](#)



- b.open VLC software to play stream
- default http stream address:<http://192.168.1.168/0.ts>
- default rtsp stream address:<rtsp://192.168.1.168/0>



4. Network Setting

4.1 Ethernet Port

Network

LAN

DHCP:

IP:

Netmask:

Gateway:

MAC:

DNS

DNS1:

DNS2:

NTP

NTP Enable:

NTP Server:

Time Zone:

Port

HTTP Port: [1-65500]

RTSP Port: [1-65500]

Instructions: in terms of IP address of the equipment, the factory default is 192.168.1.168. If you forget the IP address after modification, you can reset the equipment by pressing the rest button for 12 seconds when the equipment is powered on, and restore the factory default ip.

4.2 WIFI/AP SETTING

4.2.1 AP Mode

WIFI

WIFI

Wifi:

Wifi mode:

AP

Wifi Essid:

Wifi password:

Wifi band:

Wifi channel:

AP (Access Point) mode is default wireless status.

Default AP name is AP_Encoder_XXXX, you can search hotspot on smartphone or laptop. Default pass is 12345678.

Wifi band supports 2.4G/5.8G

Wifi channel: if wireless transmit is jam, you can try to switch channel

WIFI Status

WIFI SSID: AP_Encoder_47752

WIFI IP: 192.168.8.8

WIFI MAC: 7C:A7:B0:35:5C:1C

You also can check ap information on status page.

4.2.2 WIFI Mode

WIFI

WIFI

Wifi:

Wifi mode:

WIFI Main Profile

Wifi List: [Refresh](#)

Wifi Essid:

Wifi password:

Wifi DHCP:

Wifi IP:

Wifi netmask:

Wifi gateway:

Select WIFI mode, you can click Refresh to scan hotspot after reboot

Fill correct hotspot name and pass and wifi ip. Click Apply button, reboot
You will check the connection information on status page.

WIFI Status

WIFI: COMPLETED
WIFI SSID: HUAWEI-040M0N_5G
WIFI IP: 192.168.0.168
WIFI MAC: 7C:A7:B0:35:5C:1C
WIFI Level: 71%
WIFI Freq: 5.745 GHz
WIFI Max Bit Rate: 270 Mb/s

If the wifi level is under 60%, please check environment, it is better to visual range away from router.

5. Main Stream Encoding Setting

5.1 Encoding Setting of Main Stream

Main stream

Encoding Type: ▾

FPS: [5-60]

GOP: [5-300]

Bitrate(kbit): [32-32000]

Encoded Size: ▾

H.264 Level: ▾

Bitrate Control: ▾

TS URL: ▾

HLS URL: ▾

FLV URL: ▾

RTSP URL: ▾

RTMP URL: ▾

RTMP/RTSP PUSH URL: ▾

Multicast IP: ▾

Multicast Port: [1-65535]

5.1.1 Encoding Type: H.264 or H.265 or Mjpeg

5.1.2 Encode level: baseline profile / main profile / high profile

5.1.3 Encoding frame rate: 5-60 frames (it can output 60p When Input is 60p)

5.1.4 Bitrate control: VBR(quality priority) and CBR(bandwidth Priority)

5.1.5 GOP: 30

5.1.6 Encoding size: 1920x1080, 1680x1050, 1280x720, 1024x576, 850x480, 720x576, 720x540, 720x480, 720x404, 704x576, 640x480, 640x360, 608x488,

544x480,480x480,480x384,480x360,480x320,480x272,480x720,400x320
,400x224,352x480,352x228,320x256,320x240,320x180,240x180,176x
144

5.1.7 Video bit rate: 16-32000K

5.2 Main Stream Protocol Setting

UTP protocol(Private) ,Default address **<http://192.168.1.168/0.utp>**

HTTP protocol,Default address **<http://192.168.1.168/0.ts>**

HLS protocol,Default address **<http://192.168.1.168/0.m3u8>**

FLV protocol,Default address **<http://192.168.1.168/0.flv>**

RTSP protocol,Default address **<rtsp://192.168.1.168/0>**

RTMP pull stream address:

Default address **<rtmp://192.168.1.168/live/0>**

default port :1935

RTMP push stream address:

<rtmp://ip:port/xxx/xxx>

or

<rtmp://user:pass@ip:port/xxx/xxx>

RTMP default port: 1935

Multicast protocol,Default address **<UDP://@238.0.0.1:1234>**

Unicast protocol,Default address: **<UDP://@192.168.1.50:1234>** (Note:192.168.1.50
is received device)

5.3 OSD Setting

Main stream

Alpha: [0-128]

Zone 1

Zone:

Type:

X: [0-1920]

Y: [0-1080]

Text:

Font Size: [8-72]

Background Color:

Color: [select color](#)

Zone 2

Zone:

Zone 3

Zone:

Zone 4

Zone:

5.3.1 Zone 1-4,you can enable max to 4 image or txt

Text, support English/number Character

Image, support 24bit BMP file ,less than 500KB,transparency color is **R:241**

G:241 B:241

5.3.2 X coordinate: the left and right positions displayed by 0-1920 text.

Y coordinate: the up and down positions displayed by 0-1080 text.

5.3.3 font: the size of 8-72 text display in the display screen.

5.3.4 Alpha: 0-128 , transparency

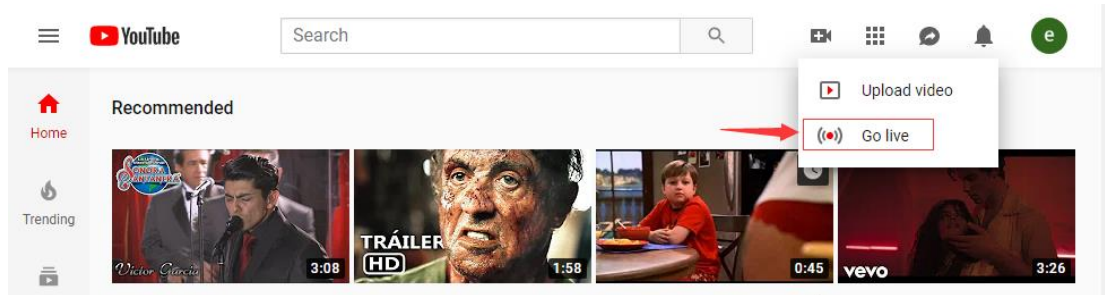
5.3.5 Logo: select logo files

5.4 Sub Stream Encoding Setting

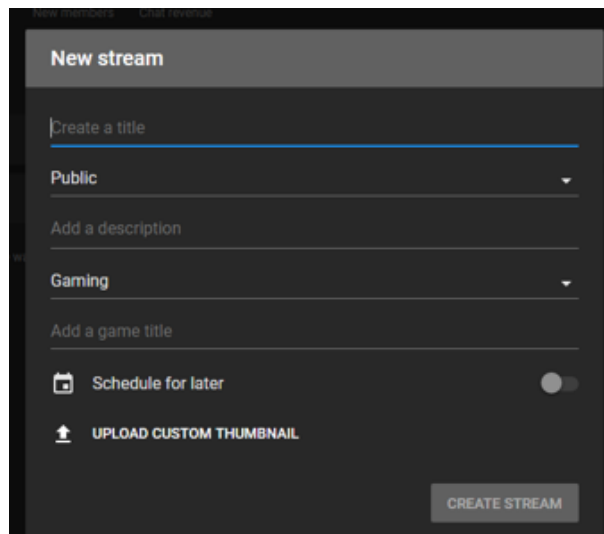
Note: the setting method is as same as that of main stream

6. Instructions for Youtube Streaming

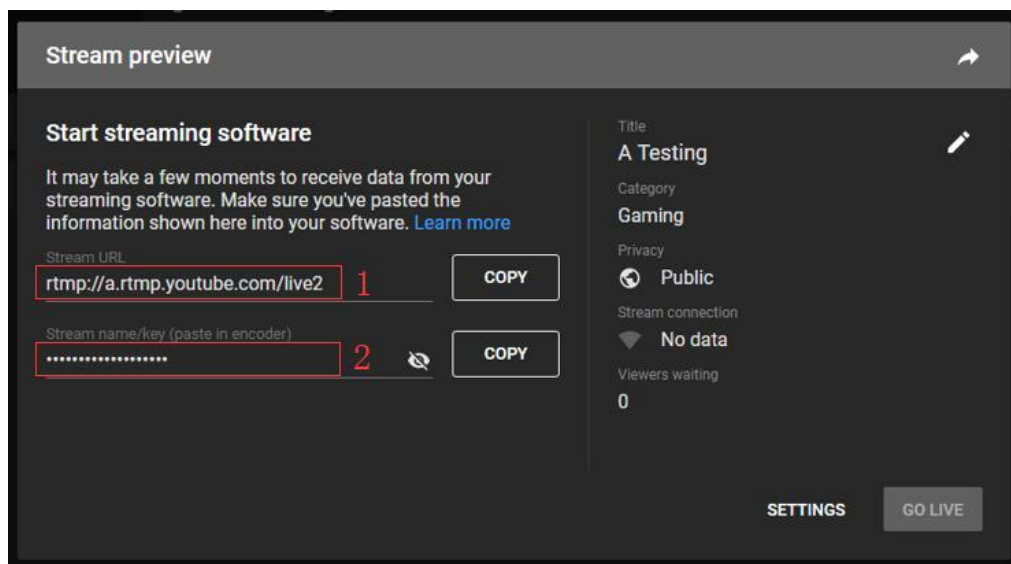
1.Open live streaming page on Youtube



2. Create a live stream channel



3. Copy rtmp address from Youtube



The whole address(part 1+part 2) is_

<rtmp://a.rtmp.youtube.com/live2/87gg-dtd0-7atc-8zww>

4. Paste whole rtmp address into encoder

TS URL:	<input type="text" value="/0.ts"/>	Enable ▾
HLS URL:	<input type="text" value="/0.m3u8"/>	Disable ▾
FLV URL:	<input type="text" value="/0.flv"/>	Enable ▾
RTSP URL:	<input type="text" value="/0"/>	Enable ▾
RTMP URL:	<input type="text" value="/0"/>	Disable ▾
RTMP/RTSP PUSH URL:	<input type="text" value="rtmp://a.rtmp.youtube.com/live2/87gg-dtd0-7at"/>	Enable ▾
Multicast IP:	<input type="text" value="238.0.0.1"/>	Disable ▾
Multicast Port:	<input type="text" value="1234"/>	[1-65535]

[Apply](#)

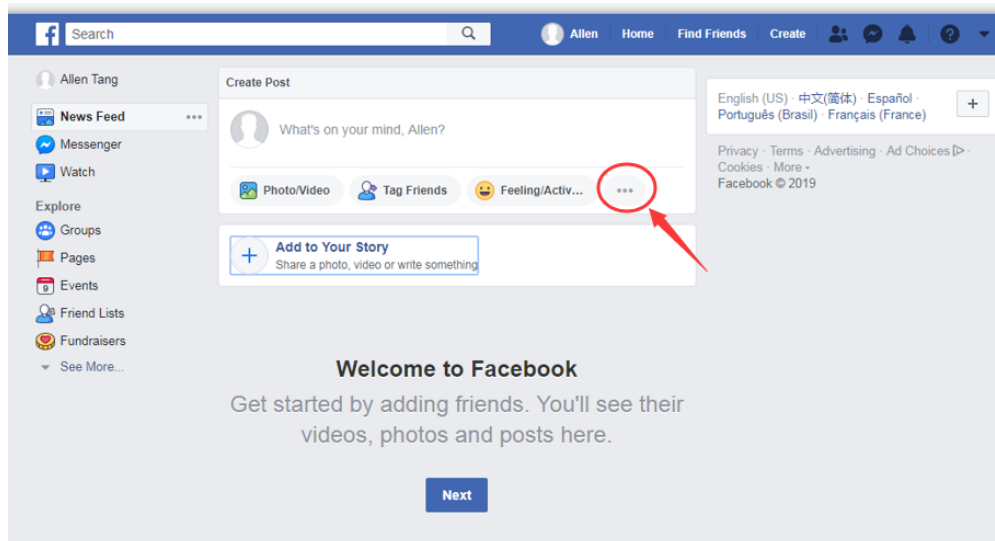
Paste whole rtmp address

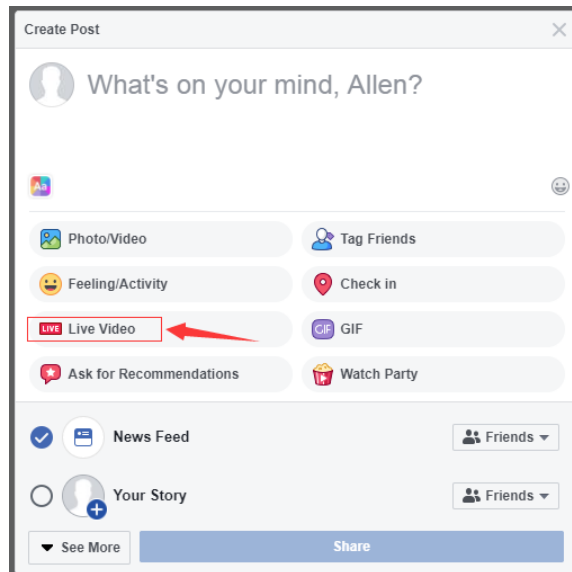
Enable it

Click Apply button

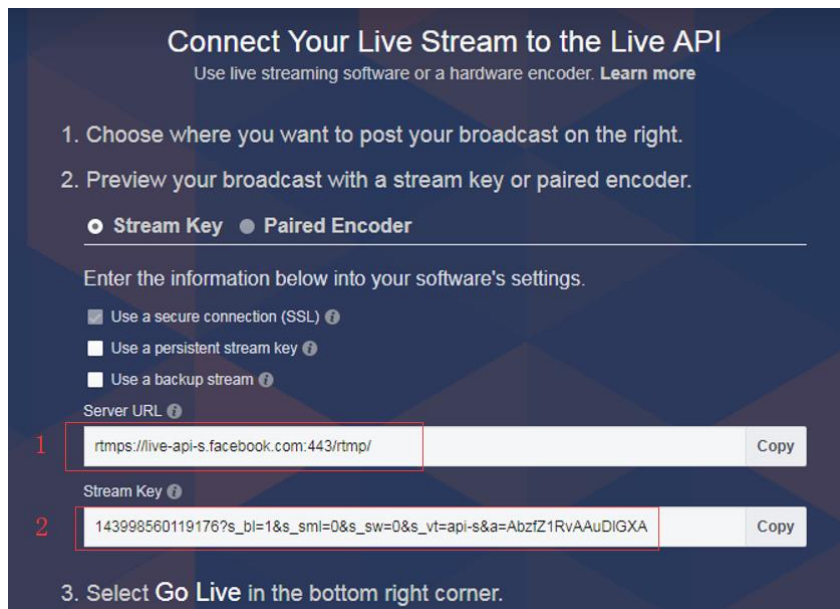
7. Instructions for Facebook Streaming

1. Open live streaming page on Youtube





2. Copy rtmp address from Facebook



The whole address(part 1+part 2) is_
rtmps://live-api-s.facebook.com:443/rtmp/143998560119176?s_bi=1&.....DIGXA

TS URL: Enable ▾
 HLS URL: Disable ▾
 FLV URL: Enable ▾
 RTSP URL: Enable ▾
 RTMP URL: Disable ▾
 RTMP/RTSP PUSH URL: Enable ▾
 Multicast IP: Disable ▾
 Multicast Port: [1-65535]

Paste whole rtmp address

Enable it

Click Apply button

8. Audio Encoding Settings

Audio

Audio Input: ▾
 Sampling Rate: ▾
 Encoder: ▾
 Audio Channel: ▾
 Bitrate: [48000~320000]
 Digital Volume: [-50~50]
 G711A Over UTP: ▾

ONVIF Audio

G711A Over RTSP: ▾
 G711: ▾

Audio Bit rate: 48K, 64K, 96K, 128K, 160K, 192K and 256K

Audio type: AAC,AAC+,MP3, MP2,AC3,G711A,G711U

Audio resample: 44100,48000

9. System Settings

9.1 User name and password change

Password

Old password:

New password:

Confirm new password:

Apply

9.2 Software upgrade

Language: English ▾

Version : 3.34

Upgrade: 未选择任何文件 (Upgrade file name is up.bin.Please don't upload by different people at the same time,don't power off or refresh the page during upload.)

Upload

9.3 System settings: Device reset and initialization default settings

Reset

Restore the device to factory settings.

Reset